

#### Featured on MedicineNet

Is it Depression?  
Type 1 Diabetes Slideshow  
Managing OA Pain  
Psoriasis Slideshow  
What is Ulcerative Colitis?  
Rheumatoid Arthritis

#### Healthy Kids Topics

Hand Foot and Mouth Disease  
Head Lice  
Whooping Cough  
Scoliosis  
Dyslexia  
Kids Health RSS  
Healthy Living Tips

## Tiny Batteries a Rising Risk for Children



[Childhood Illnesses Slideshow Pictures](#)  
[Parenting and Healthy Eating Slideshow Pictures](#)  
[Parenting - Fitness and Exercise Slideshow Pictures](#)

### CDC: Swallowed 'Button' Batteries Can Cause Harm, Even Death

By [Matt McMillen](#)  
*WebMD Health News*

Reviewed by [Louise Chang, MD](#)

Aug. 30, 2012 -- [Children](#) and batteries are a dangerous and increasingly common combination, according to a new CDC report. In 1998, while battery-related injuries sent 1,900 children to the emergency room, 4,800 cases were reported in 2010.

Overall, more than 40,000 children were admitted to ERs nationwide between 1997 and 2010. Almost three quarters of them were 4 years old or younger. One in 10 children required hospitalization; 14 of them died.

The CDC singled out button batteries as the most potentially harmful type of battery for young children. These are the round, button-sized batteries often used to power watches, hearing aids, and other small devices. They are easy to swallow and can get stuck in the esophagus, leading to serious injury or death.

Twelve of the 14 deaths were attributed to button batteries; the remaining two deaths also likely involved them.

"This information is consistent with recent reports showing an increase in severe or fatal outcomes with button battery ingestions from 1985 to 2009," write the authors of the report.

The data, primarily from the National Electronic Injury Surveillance System, were collected and analyzed by the federal Consumer Product Safety Commission (CPSC). That agency, the report states, "is urging the electronics industry and battery manufacturers to develop warnings and industry standards to prevent serious injuries and deaths from button batteries."

### Potentially Fatal Complications

Swallowed batteries may pass through the intestines and safely out of the body. However, they often get lodged in the esophagus. When that happens,

### Psoriasis

Symptoms, Causes and Treatment



#### Parenting Resources

[How Toddlers Should Brush Their Teeth](#)  
[Germs at Daycare: Questions to Ask](#)  
[Help Managing Your Child's Eczema](#)

#### Featured Centers

[Video: Foods That Affect Your Breath](#)  
[Dupuytren's Contracture: What You Need to Know](#)  
[What's Lurking in Your Mouth?](#)

#### Health Solutions From Our Sponsors

[Treating Depression](#)  
[Joint Pain Help Center](#)  
[Understand Fibro](#)



#### Daily Health News

[Healthy Living Adds 6 Years](#)  
[Battery Swallowing Risk](#)  
[Stress Linked to Stroke](#)  
[New IBS Drug Approved](#)  
[Drug-Resistant Tuberculosis](#)  
Health News Feed  
Newsletter Signup



a buildup of the chemical hydroxide may occur, causing dangerous [burns](#) within a couple of hours. Batteries stuck in the throat may also leak alkaline electrolyte, a corrosive chemical.

Even if the battery does not leak, it can cause harm. Direct pressure can cut off blood flow to the area where the battery is stuck, leading to tissue death.

The symptoms of battery ingestion include [vomiting](#), [abdominal pain](#), [fever](#), and [diarrhea](#), as well as difficulty breathing and swallowing. Such symptoms, which can be attributed to numerous causes, make it difficult to diagnose battery ingestion quickly. This is especially true, the report's authors point out, when a child swallows a battery when no one is around to see them do it.

"Another complicating factor arises when incidents are not witnessed or the diagnosis or treatment of battery ingestion is delayed, as it was in at least nine of the 14 fatal cases," the report states. "It is also important to recognize that children might be reluctant or unable to say that they ingested a battery or gave one to a sibling."

### Safety Measures

Battery safety standards for children's toys are dictated by law. All batteries must be inaccessible in toys designed for children under age 3, while toys for kids under 12 must make inaccessible batteries under a certain size.

At least three of the deaths noted in the report were caused by batteries from devices not meant for children, including a remote car alarm, a garage door opener, and a radio remote control. A new law being considered by Congress may require child-proofing for button battery enclosures on all consumer products.

"Parents and caregivers should be aware of the potential hazards associated with battery exposure (particularly ingestion of button batteries) and ensure that products containing them are either kept away from children or that the batteries are secured safely in the product," the report's authors conclude.

If a child swallows a battery, the CPSC advises that you immediately contact your local poison control center, your family doctor, or the 24-hour National Battery Ingestion Hotline at 202-625-3333.

SOURCES: Morbidity and Mortality Weekly Report, Aug. 31, 2012. CPSC: "How Much Do You Know about Battery Safety?" News release, CPSC.

©2012 WebMD, LLC. All Rights Reserved.

News Articles | 1 | 2 | 3 | 4 | 5

[Next Article: Only Children More Likely to Be Overweight »](#)

Share This Article

### ADHD in the Family?

- [Health Check: Signs & Symptoms](#)
- [Slideshow: ADHD in Children](#)
- [Slideshow: Brain Foods for Focus](#)

[Learn More Now](#)

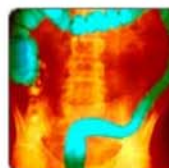


## Popular Collections

[all images »](#)  
[all slideshows »](#)



[Scales, Plaques & Eruptions](#)



Don't miss any of our doctor-produced health information!

Find it first on **facebook**

MedicineNet.com [Click Here](#)

We Bring Doctors' Knowledge to You

**WebMD**

Get trusted health information. Whenever. Wherever... with your Android, iPhone or iPad.

[Find Out More](#)

#### Pill Identifier on RxList

quick, easy, pill identification

[Use Pill Finder](#)

#### Find a Local Pharmacy

including 24 hour pharmacies

[Find it Now](#)

[Privacy Policy](#)

**Parenting and Pregnancy**  
Get tips for baby and you.

**SUBMIT**

[See All Slideshows](#)



[Systemic Lupus Erythematosus Quiz](#)

Test Your SLE IQ



## Health Solutions From Our Sponsors

About Relapsing MS  
Are You Depressed?  
Birth Control for Moms

Bipolar Disorder?  
Hearing Aid Alternative  
COPD Treatment

Diagnosed With Low T?  
Injectable RA Treatment  
Joint Pain Help Center

Osteoarthritis Center  
Options for Depression  
Itchy, Scaly Skin?

RA Patient Support  
Severe Hearing Loss?  
Women & Heart Disease

### Health Categories:

Slideshow Pictures  
Diseases & Conditions  
Symptoms & Signs  
Procedures & Tests  
Medications  
Image Collection  
Quizzes  
MedTerms Dictionary  
Pet Health

### Popular Health Centers:

Allergies	Hearing & Ear
Arthritis	Heart
Blood Pressure	Infectious Disease
Cancer	Men's Health
Chronic Pain	Mental Health
Cold & Flu	Pregnancy
Diabetes	Sexual Health
Digestion	Skin
Health & Living	Women's Health
Healthy Kids	More...

### MedicineNet.com:

Privacy Policy  
Newsletters  
Contact Us  
Site Map  
WebMD Corporate  
WebMD  
Medscape  
Medscape Reference  
eMedicineHealth  
RxList  
BootsWebMD

### Follow Us On:



Ad Choices

©1996-2012 MedicineNet, Inc. All rights reserved. [Terms of Use](#).  
MedicineNet does not provide medical advice, diagnosis or treatment. [See additional information](#).